

## 2023 Training Fund Snapshot

As we look back on 2023, we are proud of several accomplishments, including:

- Increased access to education
- Diversified the workforce
- Continued to expand our impact and our footprint

[Learn more](#) about what we do, our work in 2023, and our 15-year legacy.

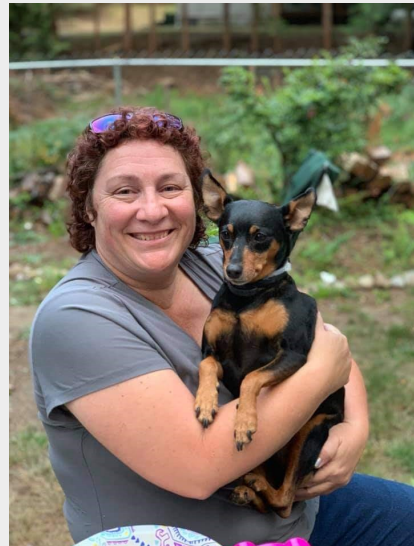
2023 Snapshot

## Welcome to our New Members

[Providence Hospice and Home Care of Snohomish County](#)

**Joined the Training Fund on January 01, 2024. We're excited to welcome these new members and start serving them!**

"I would not have gotten my RN without this fund. I am always so grateful for this. This fund helped me with books, tuition, tutors and even scrubs for clinicals." -Sarah Taylor, RN,  
Providence Hospice and Home Care of Snohomish County



**We are also thrilled to welcome Chaplains as new members at [Providence Swedish](#).**

[Kaiser Permanente SWEA, OT, PT Members](#)

**Welcome to our new members at Kaiser Permanente of Washington! We are thrilled to have Social Workers Employee Association, Physical Therapists, and Occupational Therapists join the Training Fund.**



"The Training Fund allows us to invest in our careers and better serve our patients, without having to pull from our personal food, housing or other budgets. Especially for BIPOC folks, the Training Fund opens doors that many of us may not have been able to access." - Alanna Martin, Social Worker, Kaiser Permanente

---

## **Program Spotlight:** HEET Programs

### **Hospital Employee Education and Training (HEET) Grants**

HEET Grants provide funding to help educate and train healthcare workers. The Training Fund coordinates HEET projects with labor, management, and college partners.

Current programs include:

- Part-time RN Pathway Supports at Bellingham Technical College
- Part-time RN Pathway and Open Access for Working Students at Highline College & Green River College
- Enhancing Pathways for Underrepresented Populations at Shoreline Community College
- Enhancing Nursing Pathways at Bellevue Community College
- Phlebotomy Tech Pathway at Renton Technical College

Training Fund members participating in HEET pathways have access to additional benefits including childcare, technology, transportation, and tutoring. [Learn more and stay up to date on upcoming HEET programs.](#)

---

## **Member Spotlight: Lexi Young**

"I heard about the [Medical Assistant Apprenticeship](#) program through our Union Newsletter. This was the perfect opportunity to restart my journey to become a Medical Assistant."  
[The Training Fund](#) partners with Neighborcare

Health to offer various apprenticeships through the [HealthCare Apprenticeship Consortium](#). Read how the MA apprentice program has transformed Lexi's healthcare career.



[Lexi's Success Story](#)

## Upcoming Deadlines

[Explore your PD Benefits](#)

### **Pro/Tech Conference Deadline: March 1st**

Pro/Tech members can apply for Conference Travel and Funding to cover transportation, lodging, and conference registration.

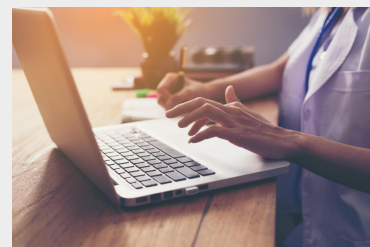


**Apply before March 1st for any conferences that you plan to attend between April and June 1st 2024.**

[Apply for Conference Funding](#)

## Free Access to Unlimited CEU Courses through HealthStream

**In 2023, there was a 74% increase in members using their professional development benefit to complete their Continuing Education Units largely due to the fantastic benefit of FREE CEU courses through HealthStream.**



Complete as many job-related CEUs as you like through HealthStream CE Unlimited for free with the Training Fund!

HealthStream CE Unlimited also offers:

- Compliance training, upkeep training, and much more

- Lots of interactive, fresh, and customized content
- Tracking to help you stay on top of deadlines – can track license expiration, sends helpful reminders, and even suggests courses based on your experience and track record

[Learn More](#)

**Want to get started with the Training Fund? Reach out! Tell us what you're interested in, and we will connect you.**

[Get in touch with us!](#)



[www.healthcareerfund.org](http://www.healthcareerfund.org) | [members@healthcareerfund.org](mailto:members@healthcareerfund.org) | 425-255-0315



SEIU Healthcare 1199NW Training Fund | 15 South Grady Way, Renton, WA 98057

[Unsubscribe mgantony@healthcareerfund.org](mailto:mgantony@healthcareerfund.org)

[Update Profile](#) | [Constant Contact Data Notice](#)

Sent by [members@healthcareerfund.org](mailto:members@healthcareerfund.org) powered by



Try email marketing for free today!